

# A MARKET TO MINE APPROACH



**GIMPEX-IMERYS INDIA PRIVATE LIMITED**

An ISO 9001:2015 certified company

[www.gimpex-imerys.com](http://www.gimpex-imerys.com)



## ABOUT US

Gimpex-Imerys India Pvt. Ltd. is one of the largest bentonite mining reserve worldwide. Gimpex Ltd. a \$ 250 million company dealing in extraction of Bentonite, Barite, iron Ore, Coal mill scale, Granite, Marble and the largest producer of Bentonite in India. Imerys with a turnover of \$5 billion comes with their mineral based specialities. Gimpex Ltd. and Imerys came together to a 50-50 Joint venture in 2015. In 2014 Gimpex had an association with S & B Industrial Minerals and was later acquired under Imerys as a part of the Joint Venture. Both the companies have come together to revolutionise the industry with advanced mining techniques, processing and Research & Development emerging as the top-rated Bentonite producer. We have a powder production capacity of 1,50,000 MT/Annum & Lumps capacity 5,00,000 MT/Annum,



## CERTIFICATIONS & MEMBER



## PRODUCTION FACILITIES



PRODUCTION CAPACITY	:	150000 MT/YEAR
GRINDING MILL-5	:	TGM 160 & 2- BM-8 & MTW 175Z, Pulverizer
CONNECTING LOAD	:	1200 KVA
SILO (Storage)	:	3 with 135 MT EACH
PACKING MACHINE	:	AUTOMATED, 2
CAPACITY	:	15-20 MT/HR
STORAGE CAPACITY (Finished Goods)	:	8000 MT
STORAGE CAPACITY (Raw Material)	:	50000 MT
WEIGH-BRIDGE	:	100 MT CAPACITY
FORK LIFT	:	6 NOS
LOADER	:	2 NOS

## OUR MARKET STAND

We bring a rich experience of 3 decades in mining & processing minerals. We have created a remarkable market position with our product Bentonite. A very strong Quality Control and production standard ensures Gimpex & Imerys emerge as the industry leaders with the following accolades:

- ◆ Leading Bentonite Exporter Worldwide
- ◆ Leading Bentonite Producer Worldwide
- ◆ Our IOP, Drillings & Foundry grade of Bentonite is the highest in demand amongst the European & Indian Consumers.
- ◆ We are also conferred upon some valued titles for the services we offer:
- ◆ We have been given the status of "Star Export House" by the Government of India for our consistent quality service.



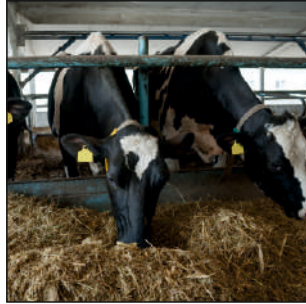
# INDUSTRIES WE CATERES

Our product range enables us to cater to a wide spread of industries. We currently cater to industries like IOP, Foundry, Drilling, Construction/Tunnelling, Fertilizer, Animal Feed, Paper & Cosmetics & Cat Litter.

Agriculture / Fertilizer



Animal Feed



Cat Litter



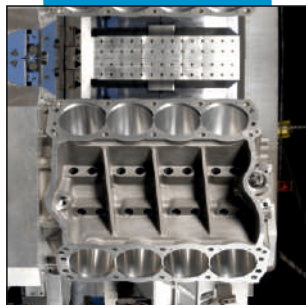
Construction Drilling



Drilling



Foundry



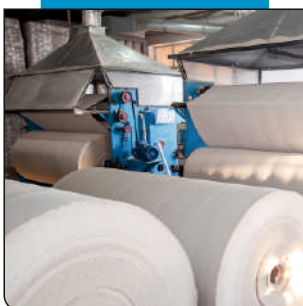
Geosynthetic clay liners (GCLs)



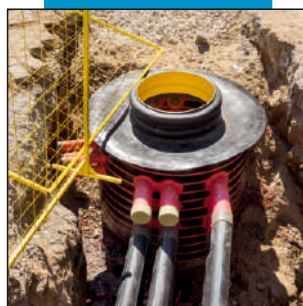
IOP



Paper



Earthing



Tunneling / HDD



## CORPORATE OFFICE & PLANT

Our Corporate office and plants is located at Moti Bhadai, Tal. Mandvi - Kutch region of Gujarat which has large deposits of Bentonite within the Radius of 150 Kms.

The manufacturing plant is equipped with state-of-art technology with the latest equipments like roller mills, Silos, Forklifts, Weighbridge with highest rate of EHS standards. A fully equipped laboratory & processing unit ensures the finest products meet the customer demands worldwide.

With operations on over 50 countries, Gimpex-Imerys has a corporate office in Bhuj and an accomplished state-of-art plant that is spread over 15 acres. A fully equipped lab and processing unit supports the quality standards of their production. Different departments like Mixing, Plant & Maintenance, Quality Control, Purchase, Marketing, Exports, Business Development, Logistics & Finance make us a full-fledged operational company.



# OTHER INFRASTRUCTURE



- ◆ Within Group 250 industrial sites in 50 countries.
- ◆ In-house cargo stuffing facility granted by Government of India (STAR EXPORT HOUSE) in recognition of consistent export performance.
- ◆ Production unit location Bhadai holds a strategic position for exports. Bhadai is based at 80-100 kms. From important Sea ports in Gujarat namely Mundra & Kandla.
- ◆ State of Art fully equipped Laboratories with Quality Control support in bentonite markets.



## OUR STRENGTH

Maintaining the leadership position to our brand comes as a virtue of certain practices and business processes we follow:

- ◆ Mineral Processing  
We are involved in processing different minerals under various quality and grade specific to different industry requirements.
- ◆ Market to Mine Approach  
We follow the latest trend in the market to mine right product to the right customer
- ◆ Finest Quality Products  
Our products are manufactured and subsequently tested under strict 8 stage quality evaluation adherence and therefore highly preferred and procured.
- ◆ A Diversified Mineral Portfolio  
We are market leaders in Bentonite production, but simultaneously also produce a diversified range of minerals. We hold leadership positions Worldwide for Graphite, Talc, Ground Calcium Carbonate, Mica, Kaolin, and Fused minerals.



## LEADERSHIP POSITION IN HIGH VALUE MARKETS

We hold leadership positions for our finest range of products like-








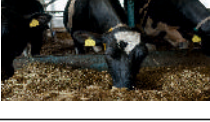



- ◆ Number 1 and Number 2 position for minerals like Graphite, Talc, Ground Calcium Carbonate, Mica, Kaolin and Fused Minerals.
- ◆ Catering to High Value Markets Like - Plastics, Paper, Refractories, Sanitaryware & Filtration.

## CONTACT US

We are constantly making the efforts to bring value through our products and services. Should you be interested in knowing how we can add value to your products, reach out to us at: [www.gimpex-imerys.com](http://www.gimpex-imerys.com)



## OUR PRODUCTS FOR VARIOUS APPLICATIONS

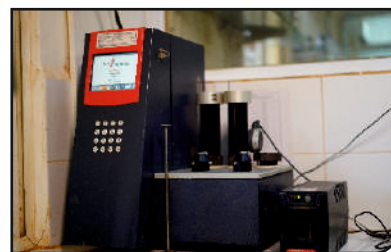
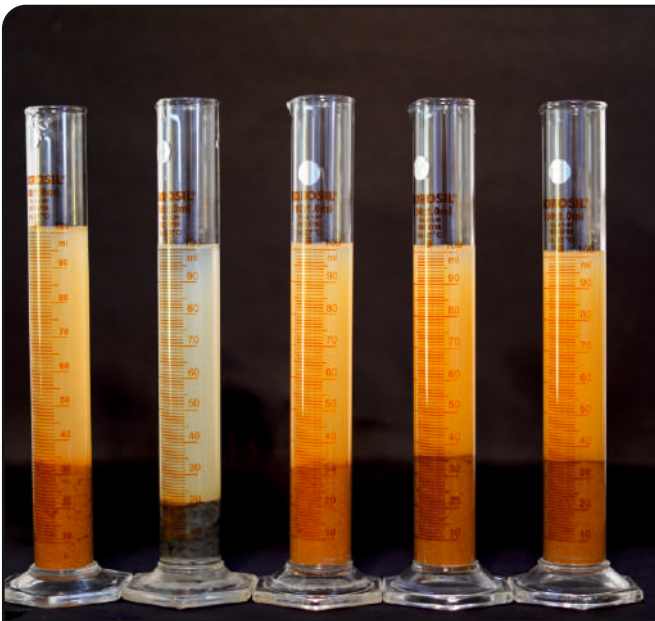
APPLICATIONS	PRODUCTS			
	IOP PELLETIZING	GIMBOND® - IOP	POWDER	LUMPS
	FOUNDRY	GIMBOND® -	IKOBOND® B	IKOBOND® I
	DRILLING	GIMDRILL - 9	GIMDRILL - 11	
	HDD TUNNELING	IBECO 120i	IBECO 150i	IBECO 180i
	FERTILISER	GIMSULF®	GIMSULF Plus	GIMSULF® Delight
	PAPER	ALTONITE HG	Hydrogim®	Smectogim
	EARTHING	GIMFILL®15	GIMFILL®30	GIMFILL®MX
	FEED GRADE	ANAMONT	ANAMONT CC2	
	GEOSYNTHETIC CLAY LINERS (GCL)	GIMGCL GRANULES	GIMGCL POWDER	
	AGRICULTURE	GIMAGRI GRANULES	GIMAGRI POWDER	
	CAT LITTER	GIMP® Granular Bentonite		



Quality lab facility at Gimpex Imerys is equipped with 60+ Instruments and equipment's to maintain consistency In Quality. With technical Support from Research and Innovation division from Imerys europe we have been consistently able to Improve our quality performance for each applications and have been developing new value added products.

We are following multi stage quality control and insurance process to maintain the QMS for compliance and consistency.

- ◆ We are following unique storage and traceability methods for sampling and production material.
- ◆ Customer Satisfaction & Value addition for all our product ranges.
- ◆ We Invite you all to visit us at our lab and establishment.







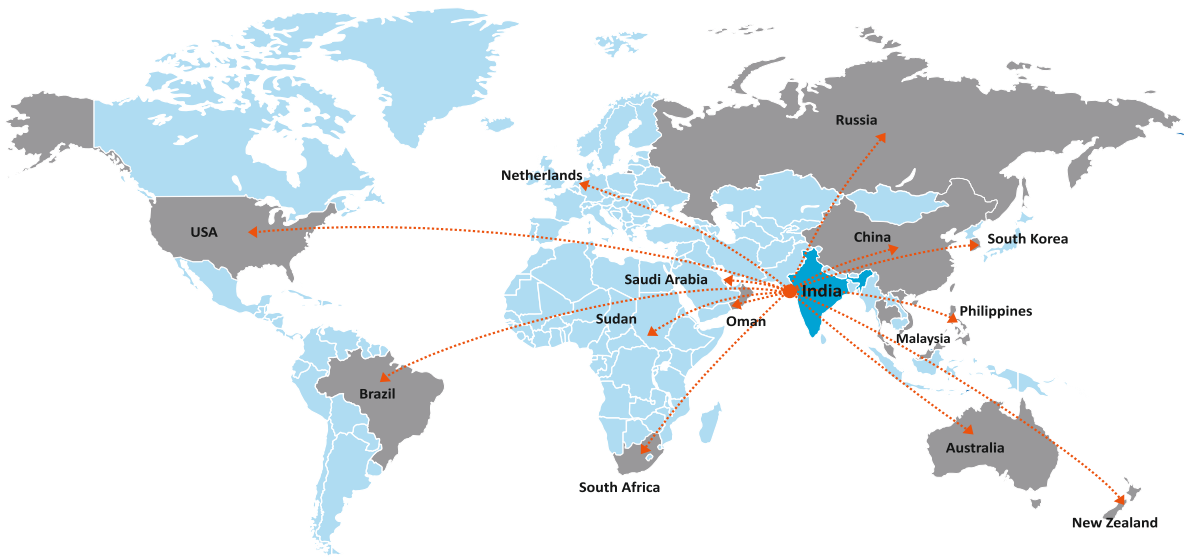
## GROWTH YARDSTICKS

We have envisioned the market demands for bentonite and other minerals. Our vision is to maintain our current market leader stand while reaching to newer markets simultaneously with our finest range of minerals. With this outlook, we have garnered the following resources to supplement our growth.

- ◆ 200-250 acres approx. currently under our own mining domain.
- ◆ 500 acres under application with government.
- ◆ A total reserve of 2 million tons of quality grade Bentonite.
- ◆ Additional estimated 15 million tons under application.



## OUR FOOTPRINTS



### REGISTERED OFFICE

Gimpex - Imerys India Private Limited  
Hall No. 9, Sun Plaza, Opp. Commerce College,  
Mirzapar Highway, Bhuj (Kutch) - 370001. Gujarat, INDIA

☎ (02832) 231148/231257

☎ +91 90990 44690/ 89801 81783/ 75676 09676 /75676 09876/ 98250 06284

✉ info@gimpex-imerys.com

🌐 www.gimpex-imerys.com

Follow us on: 